

Customer :

customer

Customer part :

customer part

Comment :

Comment

S1=1.84

S2=2.48

Tmax=465

Tp S2=504.0

PI=0.43

HI=123

Sample =1630.10

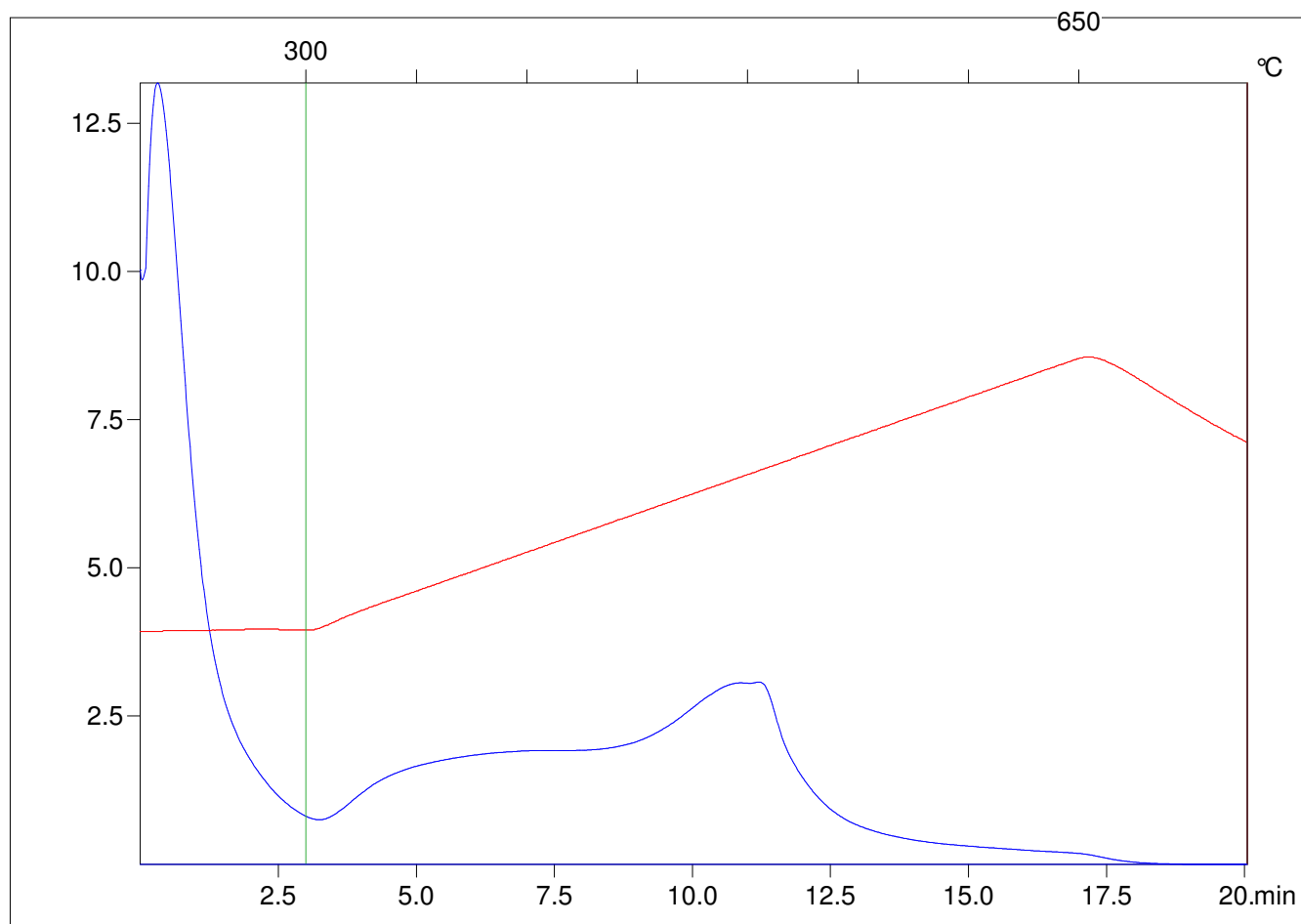
Method =Bulk Rock

Cycle=Basic

KFID(10*9)=1444

Qty =69.9

TOC=2.02



C:\VINCI\PK1792\PK019.R00 : FID pyrolysis graphic

State

Pyro Status

Oxi Status